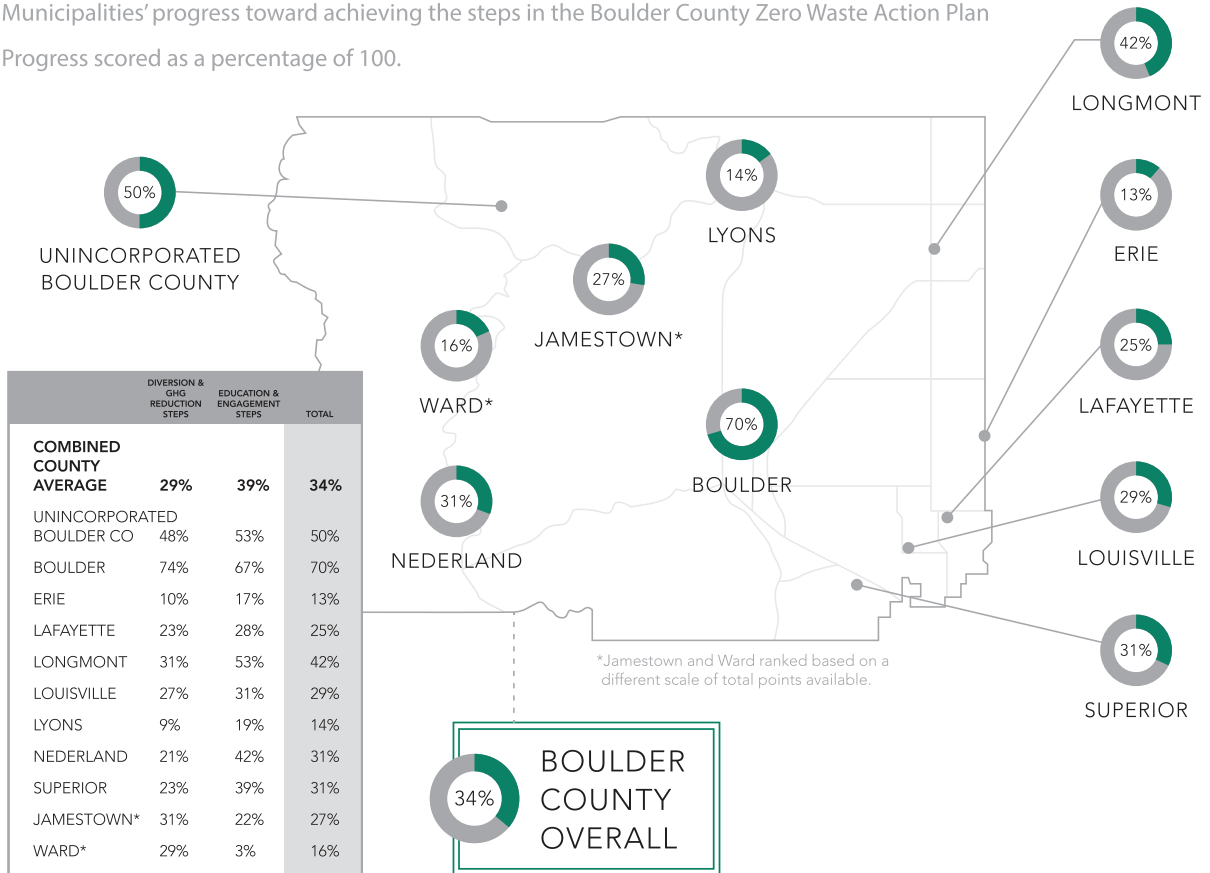


# Boulder County Zero Waste Action Plan Scoring Report

OCTOBER, 2020

## Boulder County Municipality Scoring

Municipalities' progress toward achieving the steps in the Boulder County Zero Waste Action Plan  
Progress scored as a percentage of 100.



Sustainability,  
Climate Action  
& Resilience



# Table of Contents

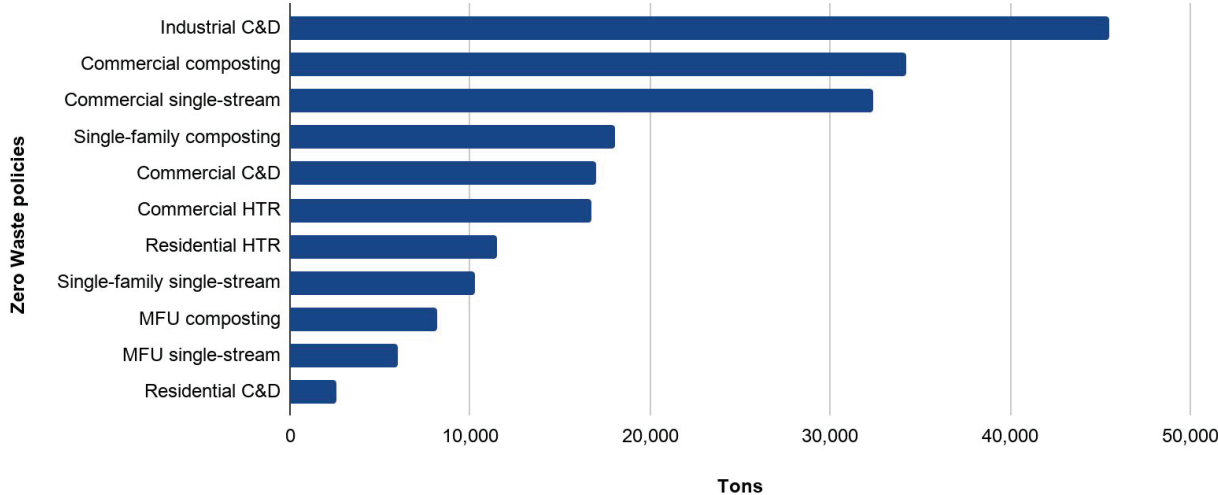
- Summary and key findings ..... 3
  - Package of tools for each community* ..... 6
  - Overview of evaluation and scoring process*..... 8
  - Limitations and shortcomings of the process*..... 10
- Policies that increase single-stream recycling and organics diversion ..... 13
  - Commercial sector*..... 13
  - Single-family sector* ..... 14
  - Multi-family sector* ..... 15
- Programs that divert hard-to-recycle materials ..... 16
- Policies that divert construction & demolition (C&D) materials ..... 18
- Policies that avoid waste and increase reuse ..... 19
- Policies that educate and engage the community ..... 21
- Other foundational strategies to support all programs..... 23
- Supplemental community engagement & education strategies ..... 25
- Boulder County Zero Waste Action Plan Update ..... 27

# Summary & Key Findings

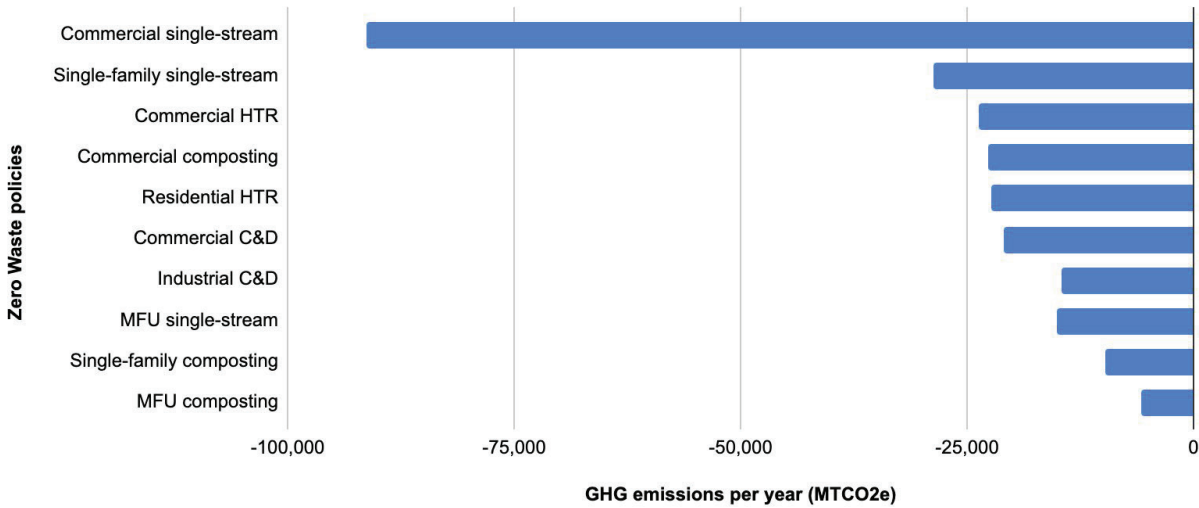
This Zero Waste Action Plan Scorecard is a joint initiative between the Resource Conservation Advisory Board (RCAB); Boulder County Office of Sustainability, Climate Action & Resilience; and Eco-Cycle. It was created to help Boulder County assess and update its 2010 Zero Waste Action Plan, and also serves to help each community within Boulder County identify increased opportunities for waste diversion. Boulder County has a goal of “Zero Waste or darn near” by 2025, and works together with its municipalities toward achieving this goal. To develop this tool, Eco-Cycle researched and interviewed each community about its current Zero Waste programs and services.

The 2019 Boulder County Waste Composition Study found that **nearly two-thirds of the materials sent to the landfill in the County could have been recovered, or over 150,000 tons per year. Recycling and composting these materials could save 245,000 tons of carbon emissions (MTCO 2 e) annually.** This is the equivalent of taking 55,000 cars off the road each year. Increased single-stream recycling from businesses was found to have the largest potential to reduce GHG emissions among the action steps surveyed, with the potential to reduce over 91,000 MTCO 2 e per year. The large potential GHG savings from commercial recycling happens for two reasons: 1) There is a relatively large number of tons of single-stream recycling from businesses in the County’s waste stream, and 2) There are substantial energy savings from recycling materials such as cardboard and office paper, which are prevalent in commercial waste. **Increasing cardboard recycling from businesses alone could save over 40,000 metric tons of carbon emissions per year, making it the single largest opportunity to reduce GHG emissions.**

Additional Tons That Could Be Diverted by Program



## Potential Reduction in GHG Emissions From Additional Waste Diversion



When looking at the combined potential to divert tons and reduce carbon from the remaining materials being landfilled, the action steps for Boulder County are ranked in the following order from highest potential to lowest:

Rank by Diversion & Carbon Reduction Potential		
	Action Step	Total possible weighted points
1	Require single-stream recycling services at businesses	75
2	Require C&D project deconstruction and require C&D recycling and reuse	71
3	Require compost collection at businesses	39
4	Offer convenient locations for metal recycling	27
5	Require PAYT & automatically include recycling with curbside garbage service for residents	24
6	Provides residential curbside compost collection	19
7	Implement recycling collection at MFUs	13
8	Implement composting collection at MFUs properties	9
9	Provide options for other hard to recycle materials	7
10	Increase electronics collection from residents and businesses	7
11	Support collection of household hazardous materials	4

It is important to note that these calculations reflect the potential to divert remaining materials from the landfill and the greenhouse gas savings that would be realized by diverting those tons. This does not include the current materials already being diverted or the greenhouse gas emissions that are already avoided through the County's Zero Waste efforts.



**The Zero Waste Scorecard analysis found that Boulder County as a whole is about one-third of the way toward implementing the policies, programs, infrastructure, and community engagement strategies that are critical to building a Zero Waste community.** Performance varies widely by individual municipality, with scores ranging from 9% progress to 74% progress. While the scores may vary, each community has highlights to share and some program elements that are a model for its Boulder County peers. It is crucial to acknowledge that there are many actions needed on the road to Zero Waste and this report is not an inclusive ranking of all possible actions, so each community should be recognized for its progress even if it is not reflected in their score. One of the primary goals of this project is to encourage communities to learn from one another and to support them as they move one rung up the ladder at a time across these action steps.

# Final Scorecard Results by Municipality

## PERCENTAGE SCORE TOWARD BOULDER COUNTY ZERO WASTE PLAN

	DIVERSION & GHG REDUCTION STEPS	EDUCATION & ENGAGEMENT STEPS	TOTAL PROGRESS
COMBINED COUNTY AVERAGE	29%	39%	34%
BOULDER COUNTY	48%	53%	50%
BOULDER	74%	67%	70%
ERIE	10%	17%	13%
LAFAYETTE	23%	28%	25%
LONGMONT	31%	53%	42%
LOUISVILLE	27%	31%	29%
LYONS	9%	19%	14%
NEDERLAND	21%	42%	31%
SUPERIOR	23%	39%	31%
JAMESTOWN*	31%	22%	27%
WARD*	29%	3%	16%

\* Scored on a different scale of total available points because not all action steps were applicable.

This chart summarizes the progress each community has made towards the action steps in the Boulder County Zero Waste plan. These results do not measure the communities’ diversion rates and progress toward achieving zero waste as a quantitative goal. While Boulder County’s ZW plan lays out the fundamental action steps toward creating a Zero Waste community, it is not an exhaustive list, but rather intentionally limited in scope to focus on the key policies and programs needed. As communities continue to improve, a broader scope of policies and programs at both the state and national level may be needed to truly reach zero waste.

The total score is an average of the Diversion & GHG Reduction score and the Education & Engagement score, with equal weight given to each category. Both categories of action steps are important for achieving the County’s Zero Waste goals and need to co-evolve together to ensure that diversion programs meet their potential success. However, it should be noted that most communities have made more progress to date on their Education & Engagement steps, which suggests more focus is needed on action steps that directly result in greater waste diversion and GHG emission reductions.

# Package of Tools for Each Community

Several documents are included in this toolkit for Boulder County and each municipality to assess their progress and prioritize action steps toward the County's Zero Waste goals. These include:

1. **Scorecard summary:** This document evaluates each community on their progress to create the policies, programs and infrastructure to support Boulder County's Zero Waste goals.
2. **Scorecard results:** This spreadsheet provides a quantitative assessment of each community's progress toward the Boulder County Zero Waste Plan and opportunities for action based on the scorecard summary.
3. **Scorecard presentation:** This slideshow provides a high-level overview of the project findings and process for community leaders and key stakeholders.
4. **2018–19 highlights:** This document showcases actions taken by each community toward the County's Zero Waste goals and their short-term priorities moving forward.
5. **Scorecard visualization:** This interactive online tool helps each community visualize their progress toward the Zero Waste Plan, compare progress with other communities and identify action steps with the greatest impact on diversion and GHG reduction.

# Overview of Evaluation and Scoring Process

Eco-Cycle and the Boulder County Office of Sustainability, Climate Action & Resilience worked together to update the action steps included in this assessment. The team narrowed down and combined the priority action steps from the 2010 Boulder County Zero Waste Action Plan and integrated new action steps to recognize emerging initiatives, such as reducing wasted food and single-use plastics. Each action step was broken down into five intermediate actions along the way to the final goal, and each of these steps was assigned a ranking of 0–4 stars to measure progress toward the overall action step goal. Eco-Cycle then interviewed staff from each of the municipalities on their Zero Waste programs, priorities, challenges, and needs. This information was integrated into the scorecard and each community was ranked based on their progress toward each action step.

Using data from the 2019 Boulder County Waste Composition Study, Eco-Cycle calculated the potential for each action step to divert additional tons from the landfill and reduce greenhouse gas emissions. Using this data, Eco-Cycle then assigned a weighted value to each action step to reflect its relative potential to reduce waste and GHG emissions. An average was used to give equal importance to both diversion and carbon reductions. The data was then normalized to a scale of 0 to 100; the higher the number, the more tons diverted and more GHG emissions saved. Each community then received a percentage of the total available points based on their progress toward the action step, which was called their weighted score. It is important to keep in mind that these calculations reflect the potential for new policies to divert additional tons from the landfill and do not measure the current diversion impacts of existing policies and programs.

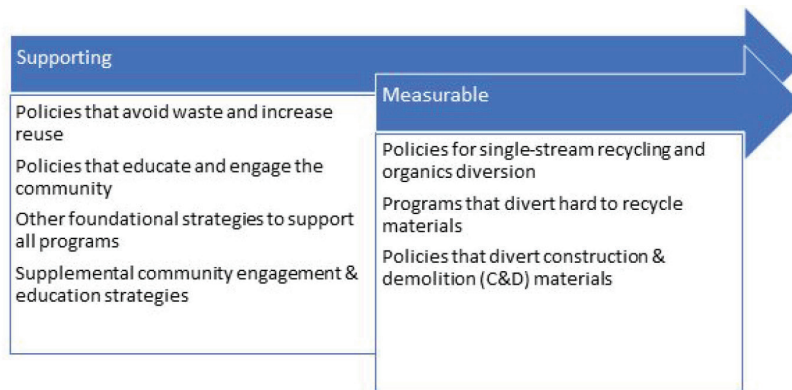
## ***Weighting and scoring example: Business recycling in Lafayette***

*The action step “Require single-stream recycling services at businesses” had a very high potential for reducing waste and GHG emissions. The action step ranked third for tons diverted with 50 points and first for GHG emissions avoided at 100 points, resulting in an average score of 75 points.*

*Each community received 0 to 4 stars toward this goal. Lafayette received one star for having a Green Business program as an intermediate action toward increasing business recycling. This means Lafayette received 25% of the 75 total points for that action step, or 19 points, toward business recycling.*

The goal of the weighting process was to give more emphasis to policies that lead to greater waste reduction and/or GHG reductions. While all of the action steps contribute to these goals, Eco-Cycle was only able to directly quantify the impacts of 11 of the 21 action steps (some steps were combined in calculations). Many of the action steps focused on education and community engagement are critical to the success of the County’s Zero Waste efforts, but a direct estimate of the tons diverted and GHG emissions saved from these programs was not feasible. Communities were still scored on their progress toward these education and engagement goals based on a scale of 0–4 stars.

**All action steps support the County’s goal to reduce waste and increase GHG emissions, but not all steps were measurable in this analysis.**



# Limitations and Shortcomings of the Process

The scorecard evaluation criteria and process have some limitations and shortcomings that do not undermine its validity but should be kept in mind as communities consider the results and recommendations:

- **Policies do not equal diversion:** The scorecard measures each community's progress toward adopting key policies, infrastructure, and education and engagement strategies that were identified by Boulder County as essential to creating Zero Waste communities. These scores do not directly correlate to our diversion rates since implementing policies does not automatically ensure successful materials recovery. As such, the community scores are presented in three categories—policies, education and diversion—to reflect that no one metric is the best indicator of success. Further, there is growing recognition within the global Zero Waste movement that there are fundamental shortcomings to relying upon the diversion rate to measure success. Work continues to introduce and standardize other metrics to complement the diversion metric such as the pounds of trash disposed of per capita or the capture rate of recovered materials.
- **Data limitations of waste composition:** The scorecard prioritizes action steps based on the tons of waste sent to landfills, as determined by the 2019 Boulder County waste composition study. This study acknowledges several data limitations within the report, particularly in its comparison to the 2010 data, but remains the best available data source. More attention should be given to general trends around recycling and composting programs, rather than exact tonnage figures.
- In particular, it should be noted that in this report a strong emphasis was put on diverting tons from the commercial sector because of the amount of tons that could be recovered and the potential to reduce carbon emissions by recycling these materials. The amount of trash produced by businesses is **not equally distributed around the County** and more work is needed to identify the extent of the opportunity to divert these materials within each individual community based on the scale and type of their business sectors.
- **Limited scope of action steps:** The action steps presented in this scorecard are not an exhaustive list of the policies and programs needed to achieve the County's Zero Waste goals. The steps are based upon the original 2010 Boulder County Zero Waste Action Plan and modified to reflect the County's current waste composition as well as emerging initiatives and priorities. The intent was to focus on a priority list of actions, rather than a comprehensive list, due to the scope of the project and the multitude of priorities already undertaken in our

communities. The 2018–2019 Boulder County Zero Waste Highlights document recognizes that there are many ways in which every community is making progress toward Boulder County's Zero Waste goals even if those steps are not explicitly included in this scorecard.

- **Diversity of Boulder County communities:** Communities in Boulder County vary in many ways, including in their size and community demographics, geography, budgets, ratio of residents to businesses, and many other factors. As a result, not all Zero Waste programs or policies are feasible in every community. In particular, many action steps were not fully applicable to Jamestown and Ward and these two municipalities were scored on a separate scale to reflect these differences. All incorporated towns and cities were included in the analysis but not census designated places such as Allenspark or Hygiene.
- **Limited quantitative data on impacts:** The scorecard highlights the diversion and GHG reduction potential from some but not all action steps. While all education and engagement strategies are critical to the success of diversion programs, maximizing participation, and reducing contamination, it is very challenging to assign a quantitative value to these action steps. In addition, there are many other positive benefits of these Zero Waste strategies including reducing air and water pollution, reducing public health risks, and creating local and regional jobs. These impacts were not quantified in the report but help to underscore that there are multiple benefits of these Zero Waste actions beyond just diversion and carbon reductions. It should also be noted that policies were scored on their total potential diversion and GHG reduction of 100% of the materials. In practice, policies achieve much less than 100% diversion, and success depends on a large host of factors. This project was not able to calculate the real-time diversion potential for each program and relied upon the maximum feasible diversion for each step.
- **Enforcement of policies and programs:** Many of these action steps recognize municipalities for adopting policies but do not measure how well these policies are enforced. Monitoring and enforcement strategies have been included for some action steps such as commercial recycling and C&D recycling policies, but ideally every action step would include a monitoring and enforcement mechanism. Like many Zero Waste plans around the country, the emphasis is first on providing convenient access to services and strong education and engagement strategies to drive participation. Monitoring and enforcement strategies are still in their nascent stage around the country and much is still to be learned about effective, cost-efficient strategies.
- **Industrial vs municipal C&D waste:** The Boulder County waste composition study focused on quantifying and understanding the amount and types of municipal solid waste thrown away by residents and businesses into their on-site trash containers. About 14% of this municipal material was C&D debris such as drywall and concrete. As part of the waste composition study, there was also a separate audit on industrial C&D materials that were generated by large construction projects and generally transported to the landfill in separate loads (i.e. roll-

*continued on next page...*

off containers or dump trucks direct from construction sites). Industrial C&D materials were included in this analysis for the municipal action steps related to C&D materials. Industrial C&D was estimated at 85,000 tons per year, the equivalent of about one-third of the County's total MSW waste stream. With such a large amount of tons coming from industrial C&D, the data analysis puts a lot of emphasis on diverting industrial C&D as an important goal for the County and for each municipality. However, it should be noted that more than 50% of industrial C&D material was aggregate materials such as concrete, rock, dirt, and sand. While these materials represent a large amount of potentially divertible waste, the potential GHG reductions from these materials is relatively small at only 16,000 MTCO<sub>2</sub>e. For comparison, diverting just 11,000 tons of cardboard from businesses could save 42,000 MTCO<sub>2</sub>e per year. In other words, industrial C&D diversion had the largest impact on reducing tons of materials sent to the landfill, but other action steps ranked much higher in terms of reducing GHG emissions.



# Policies to Increase Single-Stream Recycling and Organics Diversion

## COMMERCIAL SECTOR - BUSINESSES AND INSTITUTIONS

Action step: Require single-stream recycling services at businesses\*

--	★	★★	★★★	★★★★
<b>No targeted education or resources provided</b>	<b>Has local green business program</b>	<b>Requires some types of businesses to recycle</b>	<b>Requires all businesses to have recycling service</b>	<b>Monitors diversion and enforces compliance</b>
Erie Jamestown** Lyons Nederland Ward	Boulder County Lafayette Longmont Louisville Superior		Boulder	

\* Two stars may be the highest achievable score in mountain towns based on limited availability of curbside collection.

\*\* Only business in town that generates significant materials already contracts for compost and recycling.

Action step: Require compost collection at businesses

--	★	★★	★★★	★★★★
<b>No education or resources provided</b>	<b>Has local green business program</b>	<b>Provides incentives or funding for equipment or services</b>	<b>Requires some businesses to compost</b>	<b>Requires all businesses to compost</b>
Erie Jamestown Lyons Nederland Ward	Lafayette Longmont Louisville Superior	Boulder County		Boulder

\* Two stars may be the highest achievable score in mountain towns based on limited availability of curbside collection.

## RESIDENTIAL SECTOR - SINGLE FAMILY

Action step: Require volume-based pricing or Pay-as-You-Throw (PAYT) for residential garbage collection

--	★	★★	★★★	★★★★
<b>No requirements</b>	<b>Charges drop-off center users based on volume</b>	<b>Requires PAYT in some areas</b>	<b>Requires PAYT for all households</b>	<b>Provides option for every other week trash collection</b>
Erie* Jamestown Lyons* Superior Ward	Nederland*	Boulder County Lafayette Louisville	Boulder	Longmont

*\*May be offered by some haulers*

Action step: Automatically provide single-stream curbside recycling alongside trash collection for residents

--	★	★★	★★★	★★★★
<b>No curbside recycling options</b>	<b>Provides free recycling drop-off</b>	<b>Requires recycling for some households</b>	<b>Requires recycling for all residents</b>	<b>Monitors diversion and encourages compliance</b>
	Erie Jamestown Lyons Nederland Ward	Boulder County Lafayette Louisville Superior	Boulder Longmont	

Action step: Provide residential curbside compost collection

--	★	★★	★★★	★★★★
<b>No support</b>	<b>Provides only seasonal collection events</b>	<b>Voluntary curbside program or permanent drop-off center</b>	<b>Requires composting for some households</b>	<b>Requires compost collection for all households</b>
Ward	Erie Jamestown Lyons	Longmont Nederland Superior	Boulder County Lafayette Louisville	Boulder

## RESIDENTIAL SECTOR - MULTI-FAMILY UNITS (MFUS)

Action step: Implement single-stream recycling collection at MFUs

--	★	★★	★★★	★★★★
No targeted education or resources provided	Assess participation levels and obstacles	Supports pilot programs or provides services to some MFUs	Requires adequate levels of collection at all properties	Provides ongoing monitoring and education
Erie Lafayette Louisville Lyons Nederland Superior		Longmont Boulder County	Boulder	

*N/A for Ward, Jamestown*

Action step: Implement compost collection at MFUs

--	★	★★	★★★	★★★★
No targeted education or resources provided	Assess participation levels and identify challenges	Supports pilot programs or provides services to some MFUs	Requires adequate levels of collection at all properties	Provides ongoing monitoring and education
Erie Lafayette Longmont Louisville Lyons Nederland Superior		Boulder County	Boulder	

*N/A for Ward, Jamestown*

# Programs that Divert Hard-to-Recycle Materials

Action step: Increase electronics collection from residents & businesses

--	★	★★	★★★	★★★★
No action	Provides educational resources on website	Offers annual collection events	Provides a collection facility	Supports curbside collection options
	Longmont Louisville	Boulder County Erie Jamestown Lafayette Lyons Nederland Superior Ward	Boulder	

Action step: Offer convenient locations for metal recycling

--	★	★★	★★★	★★★★
No action	Provides educational resources on website	Offers annual collection events	Provides a collection facility	Supports curbside collection options
	Lafayette	Erie Jamestown Lyons Nederland Superior Ward	Boulder Boulder County Longmont Louisville	

Action step: Provide options for other hard-to-recycle materials (textiles, plastic film, mattresses, etc.)

--	★	★★	★★★	★★★★
<b>No collection events or drop-off locations</b>	<b>Provides drop-off location for some materials</b>	<b>Offers annual collection events</b>	<b>Provides drop-off location for all materials</b>	<b>Supports curbside collection options</b>
Lafayette Louisville	Boulder County Longmont Nederland	Erie Jamestown Lyons Ward Superior	Boulder	

Action step: Support collection of HHM

--	★	★★	★★★	★★★★
<b>No support</b>	<b>Provides educational resources on website</b>	<b>Financially supports county program</b>	<b>Financially supports county program and holds an annual collection event</b>	<b>Advocates for state-level product stewardship</b>
Jamestown Lyons Nederland Ward		Boulder Erie Lafayette Louisville	Longmont Superior	Boulder County

# Policies that Construction & Demolition (C&D) Materials

Action step: Require deconstruction for C&D projects

--	★	★★	★★★	★★★★
<b>No resources provided</b>	<b>Provides educational resources and/or website</b>	<b>Requires a deconstruction plan and/or walk through</b>	<b>Charge a redeemable deposit for deconstruction</b>	<b>Monitor and enforce compliance</b>
Erie Lafayette Longmont Louisville Lyons Superior		Boulder Boulder County Jamestown** Ward**	Nederland*	

\*Requires a deposit on building permits that is refunded based on how much material is recycled

\*\* Jamestown and Ward building permits issued by the County, thus follow the same guidelines the County sets.

Action step: Require recycling and reuse at C&D projects

--	★	★★	★★★	★★★★
<b>No specific diversion goals</b>	<b>Requires diversion of cardboard and/or metal</b>	<b>Set a specific diversion target for at least some projects</b>	<b>Requires diversion at least 50% of materials from some projects</b>	<b>Requires diversion of 75% of all materials from all projects</b>
Erie Lafayette Longmont Louisville Lyons Nederland Superior		Boulder Boulder County Jamestown* Ward*		

\* Jamestown and Ward building permits issued by the County, thus follow the same guidelines the County sets.

# Policies that Avoid Waste and Increase Reuse

Action step: Reduce wasted food and increase recovery and donation of surplus or wasted food

--	★	★★	★★★	★★★★
<b>No education or resources provided</b>	<b>Provides educational resources to homes and businesses</b>	<b>Participates in food waste awareness events</b>	<b>Financially supports local food recovery organizations and infrastructure</b>	<b>Provides incentives or funding for businesses to track food waste</b>
Erie Jamestown Lafayette Louisville Lyons Nederland Ward	Longmont Superior	Boulder Boulder County		

Action step: Reduce food waste in local government operations

--	★	★★	★★★	★★★★
<b>No education or resources provided</b>	<b>Encourage food waste reduction in vendor contracts</b>	<b>Conduct municipal food waste audit</b>	<b>Implement food waste reduction strategies at all events on city property</b>	<b>Implement food waste prevention and recovery programs for all city facilities</b>
Boulder Boulder County Erie Jamestown Lafayette Longmont Louisville Lyons Nederland Superior Ward				

Action step: Reduce use of single-use plastics

--	★	★★	★★★	★★★★
No support	Installs water refill stations in community	Limits single-use plastics in government facilities	Implements ban or fee on single-use plastics	Requires reusable food ware for on-site dining
Erie Jamestown Lafayette Lyons Superior Ward	Longmont Louisville	Boulder County*	Boulder Nederland	

\*ban on bottled water



# Policies that Engage & Educate the Community

Action step: Require Zero Waste planning for large events on public property\*

--	★	★★	★★★	★★★★
<b>No support</b>	<b>Encourages events to be Zero Waste</b>	<b>Requires events on public property to recycle</b>	<b>Requires events on public property to recycle and compost</b>	<b>Promotes use of reusable foodware whenever possible</b>
Ward	Erie Jamestown Lafayette Longmont Lyons		Boulder Boulder County Louisville Nederland Superior	

\*See Community Engagement and Education section for complementary actions to successfully implement and enforce these policies.

Action step: Support recycling and composting at all public schools\*

--	★	★★	★★★	★★★★
<b>No recycling and composting at public schools</b>	<b>All public schools recycle</b>	<b>All public schools recycle, some schools compost</b>	<b>All public schools recycle and compost</b>	<b>Contributes municipal funds for school programs</b>
	Superior**	Erie Lafayette Longmont** Louisville Nederland	Jamestown Lyons	Boulder Boulder County Longmont** Superior**

\* Private schools are considered commercial properties.

\*\* Recognized in two categories; awarded lesser star plus an extra point in weighting calculations for funding  
N/A Ward

Action step: Provide recycling and composting at all public government buildings

--	★	★★	★★★	★★★★
<b>No services</b>	<b>Provides recycling at some city buildings or parks</b>	<b>Provides recycling at all government buildings</b>	<b>Provides recycling and composting at all government buildings</b>	<b>Prioritizes reusable foodware in municipal protocol</b>
	Ward	Erie Jamestown Lafayette Lyons	Boulder Boulder County Longmont Louisville Nederland Superior	

# Foundational Strategies to Support Other Programs

Action step: Adopt a Zero Waste goal

--	★	★★	★★★	★★★★
No goals	Adopts sustainability or environmental goals	Supports Boulder County's Zero Waste goal	Adopts specific waste diversion goal	Adopts official Zero Waste goal (better or equivalent to County goal)
Ward	Erie Louisville Lyons	Jamestown	Lafayette Longmont Superior	Boulder Boulder County Nederland

Action step: Actively participates in County Zero Waste efforts and data tracking

	Staff and advisory board			Data Tracking	
	Active member of RCAB	Designated sustainability staff	Citizen sustainability advisory committee	Tracks residential data in ReTrac	Tracks all waste data in ReTrac
Boulder	✓	✓	✓	✓	✓
Boulder County	✓	✓	✓	✓	✓
Erie	✓	✓	✓		
Jamestown			✓	N/A	N/A
Lafayette	✓	✓	✓	✓	
Longmont	✓	✓	✓	✓	✓
Louisville	✓	✓	✓	✓	✓
Lyons	✓	✓	✓	✓	✓
Nederland	✓	✓	✓	✓	
Superior		✓	✓	✓	✓
Ward				N/A	N/A

Action step: Promote purchase and use of locally-generated compost\*

--	★	★★	★★★	★★★★
<b>No support</b>	<b>Promotes the use of compost by residents and businesses</b>	<b>Provides compost to residents</b>	<b>Requires building projects to use compost</b>	<b>Requires local compost for city projects**</b>
Erie Jamestown Lyons Nederland Superior Ward	Boulder County Longmont Louisville	Lafayette	Boulder	

\* Support local food scrap composting programs by promoting compost made by local facilities that accept food scraps.

\*\*Recommendation is to purchase at least as much as what residents and businesses produce

Action step: Modify building codes to require new commercial/MFU developments to build space for recycling bins

--	★★	★★★★
<b>No code requirements</b>	<b>Requires space for recycling</b>	<b>Requires space for composting and recycling</b>
Boulder County Erie Jamestown Lafayette Louisville Lyons Nederland Ward	Boulder Superior	Longmont

\* Jamestown and Ward follow the same building codes as Boulder County. .

# Supplemental Engagement & Education Strategies to Increase Diversion and Decrease Contamination

The following action steps are crucial to building community engagement and participation in Zero Waste programs, and to shifting away from a throwaway culture toward a circular economy that keeps resources in use locally. While it is challenging to measure the direct waste diversion or GHG reductions specifically from these programs, these action steps ensure greater participation in and better understanding of all the County's recycling and composting programs. These programs are critical for increasing diversion rates and reducing contamination rates and as such, ensure the efficiency and long-term success of our Zero Waste efforts. Education and outreach strategies also provide a consistent community message that Zero Waste is important in every sector and venue in our community.

## Website Checklist

Dedicated city webpage(s) for recycling and waste diversion information, including:

- Guideline posters of what can/cannot be recycled and composted; see free, printable signs from Eco-Cycle
- Links to hauler and/or customer service contact information, including pick-up schedule and rates for trash, recycling, and compost collection (if applicable)
- Location of nearby drop-off centers and/or upcoming diversion events
- How/where to dispose of yard waste, large items, electronics, hard-to-recycle, medicines, and other household hazardous materials, etc.; including links to CHaRM and HMMF

Supplemental items may include:

- Link to Eco-Cycle's A-Z Recycling Guide
- Link to Eco-Cycle's Sorting Game for helping educate residents on what is accepted for recycling and composting

*continued on next page...*

- Information on common materials to keep out of the recycling such as plastic bags, sharps, etc.; see Eco-Cycle's Dirty Dozen list
- Link to U-Fix-It Clinics to fix broken household goods
- Why recycling is important and recycling facts
- Link to Boulder County's backyard composting guide and workshops
- Link to Boulder County Recycling Center Video to explain the recycling process.

## **Green Business Assistance Checklist**

Implement an outreach and technical assistance program including these elements:

- Standard or customized recycling and composting signage
- Provide waste audits and site visits to assess internal and external recycling collection systems
- Offer staff trainings for how and what to recycle and compost
- Promote green business efforts through recognition program
- Provide financial incentives to start or expand recycling and composting services such as funding for collection bins or compostable bags or coupons toward service costs
- Coordinate with and/or promote Boulder County PACE program
- Suggestions for avoiding waste generation through green purchasing, reusable foodware, and other opportunities

## **Zero Waste Community Events Checklist**

Event Coordinators, Exhibitors, Vendors, and Key Stakeholders

- Require all vendors to use recyclable, compostable, or reusable foodware
- Provide a ZW agreement to verify sourcing is ZW compliant
- Charge vendors a refundable deposit to promote compliance with sourcing agreement
- Provide ZW training for vendors, exhibitors, and other key stakeholders

*continued on next page...*

## Staffing and Collection Stations

- Ensure that ZW stations are clearly signed and monitored by trained staff or volunteers to educate and engage the public in Zero Waste and to ensure the proper sorting of materials
- Establish a green team proportionate to the size of the event, the type of activities, food, beverage, venue, etc.
- Ensure staff and key volunteers undergo at least annual ZW training
- Ensure a minimum number of ZW station “goalies” (ideally one per station) to monitor bins and educate patrons

## Monitoring and Improvement

- Track event performance (total generation and diversion rate, per-capita generation and diversion, food waste reduction/quantity and percent of rescued food, stakeholder’s rate of active participation, public education impact, etc.)
- Commit to continual ZW improvements beyond waste diversion (sustainably sourced materials)

# Boulder County Zero Waste Action Plan Update

## CITY HIGHLIGHTS FROM 2018-2019 & PRIORITIES FOR 2020-2021

**Boulder County** launched the Re-TRAC Municipal Measurement Program (MMP) program to collect and streamline diversion and waste data from across the county.

*Moving forward: Boulder County has started collecting funding from the sustainability tax and distributing funds to local communities. The County is starting the process to build a composting facility in Boulder County.*

**Boulder** released a Circular Economy Report to develop a holistic picture of materials being consumed, transformed and wasted in Boulder.

*Moving forward - Boulder plans to launch a new deconstruction deposit program to reduce C&D waste, with requirements for 75% diversion for all projects. Staff will develop the resources needed to enable contractors to meet the goals.*

**Erie** released its first sustainability plan and hired its first sustainability coordinator.

*Moving forward - Erie is relocating its recycling drop-off center and exploring options for accepting yard debris, electronics or other hard-to-recycle materials.*

**Jamestown** continues to hold its annual reuse event for community members to bring items that can be reused, with unclaimed items taken to Boulder and donated to nonprofits.

*Moving forward - The town plans to continue sponsoring recycling and composting at town events and would like to see a bear-proof container for composting food scraps.*

**Lafayette** set a waste reduction goal and hired its first sustainability coordinator.

*Moving forward - Lafayette is expanding its curbside composting and PAYT program to all households in homeowner associations (HOAs). The city is working with Boulder County to collect commercial diversion data and also plans to update its building code to the 2018 international green building codes.*

**Longmont** expanded its drop-off center to accept white block foam and plastic bags for recycling. The city continues to expand its opt-in curbside composting service, now with about 20% of residents participating in the program.

*Moving forward - Longmont is converting all of its recycling, composting and trash trucks to run on Compressed Natural Gas (CNG) produced at the city's wastewater treatment plant. The city is also expanding outreach to Latinx-owned businesses to encourage more recycling.*

**Louisville** updated its residential trash and recycling contract to include composting at no additional charge, resulting in a 50% increase in residents choosing the largest compost cart. The city also installed compost bins in highly-used park shelters and updated all municipal waste station signage with clear graphic designs.

*Moving forward - Louisville's new Economic Vitality Director and PACE are working to encourage more recycling at businesses. The city also plans to add recycling bins at the golf course and water bottle filling stations at the skate park and golf course.*

**Lyons** opened a new ADA accessible drop-off recycling center and explored curbside recycling and composting services for all residents.

*Moving forward - Lyons will work with middle and high school volunteers to educate campers and visitors at Laverne Johnson Park about recycling and composting, which will help increase diversion and reduce contamination.*

**Nederland** hired its first sustainability coordinator and began accepting food waste for composting at the transfer station.

*Moving forward - Nederland will use a Boulder County grant to create recycling and composting bins for events by retrofitting and reusing 300-gallon totes from the wastewater treatment plant.*

**Superior** installed compost bins in all public parks and started a green business program.

*Moving forward - Superior plans to update its waste hauling contract for old town residents to include PAYT and automatic recycling for all homes.*



[bouldercounty.org/environment/sustainability/](https://bouldercounty.org/environment/sustainability/)